



www.customcargrills.com
info@customcargrills.com

customcargrills.com LLC
PO Box 90004
Grand Rapids, MI 49509
(616) 889-2985

Year: 2022+
Make: Ford
Model: F-150 Lightning

INSTALLATION INSTRUCTIONS



What's in the Box: (1) Lower Mesh Piece
(8) 11" Cable Ties



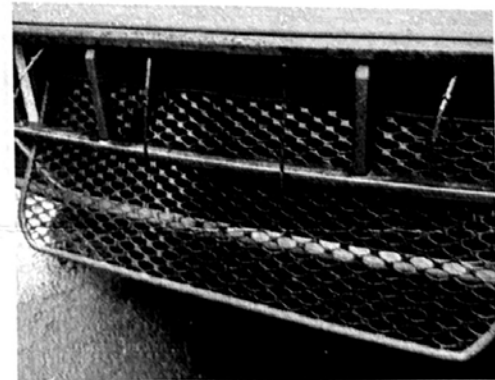
Tool List: Wire Cutters

1. Look behind the top edge of the grille opening on the lower bumper and locate the upper brackets positioned directly behind the black plastic trim.



2. Feed cable ties through the openings within the upper brackets. Plan ahead as to where you want the head of the tie to rest.

3. Feed the new mesh grille from the bottom opening until it is inserted about halfway through. You may need to gently bend the mesh for it to fit through. Do not fully insert the mesh at this point.



4. Fasten the cable ties through and around the mesh openings in the mesh grille that correspond with the upper bracket positioning.

5. Continue feeding grill mesh into opening, gently bending if needed

6. Once the mesh is completely inserted, use longnose pliers to gently pull the ends toward you until they fit into the existing groove. Be careful not to scratch the mesh.



7. Pull the cable ties tight and trim the tail ends of the ties off flush.

PLEASE NOTE: The instructions provided are the suggested installation method. If you feel that the installation instructions are inadequate or unsafe then please feel free to develop your own installation techniques that fit your exact needs. customcargrills.com llc is not liable for any personal or property damage resulting from our products. If you have any suggestions on how to improve our installation instructions then please email your comments to info@customcargrills.com.